

Community Vision – Nillumbik 2040

DRAFT

Acknowledgement of Traditional Owners

Nillumbik Shire Council respectfully acknowledges the Wurundjeri Woi Wurrung people as the Traditional Owners of the land on which Nillumbik is located, and we value the significance of the Wurundjeri people's history as essential to the unique character of the Shire. We pay tribute to all First Nations People living in Nillumbik, give respect to Elders past and present and future, and extend that respect to all First Nations People.

We recognise that Wurundjeri Woi Wurrung people hold a deep and ongoing connection to this place. We value the distinctive place of our First Nations people in both Nillumbik's and Australia's identity; from their cultural heritage and care of the land, to their ongoing contributions in many fields including academia, agriculture, art, economics, law, sport and politics.

We recognise and value the distinctive and special spiritual and material relationship that First Nations people have with the land and the water, including trees, rocks, hills and valleys, creeks, rivers and flood plains in our Shire.



Image: Bushland near Cottles Bridge

Contents

Acknowledgement of Traditional Owners 2

Message from the Council 4

Developing a Community Vision for Nillumbik..... 5

Our Themes 7

 Our People 8

 Our Place 10

 Our Future 12

 Our Council..... 14

Nillumbik community profile 16

Nillumbik now and into the future 17



Image: Preserving the past for the benefit of the future

Message from the Council

The **draft** Community Vision – Nillumbik 2040 is a document that captures the essence of what is most valued about our community and our Shire. It reflects the collective aspirations of our community, and helps ensure we are planning and contributing to a positive future for all.

In endorsing this **draft** document, our community has told us that the following elements are particularly important in Nillumbik as we move towards 2040:

- Our Green Wedge is valued, admired and protected
- Inclusion, participation and reconciliation, including equitable access to services and opportunities, is championed in all areas of community life
- The mental and physical wellbeing of our residents is supported through targeted, evidence based initiatives
- We facilitate education and action on climate change
- Housing diversity promotes quality lifestyles and protects the local character and environment
- Connected transport systems, including public and active transport, as well as appropriate infrastructure, are accessible to all residents
- There is a greater emphasis on a reduce, refuse, reuse, repurpose, recycle approach to waste management
- An increased focus on minimising energy use, as well as local, renewable energy production
- Environmental and health emergencies are managed effectively.

This **draft** document features our community's aspirations. These aspirations are not intended to just sustain Nillumbik through the next 20 years, but seek to enhance it. We will only be successful in achieving these aspirations through working together as a community.

Unlike many visions, there is not just one community vision statement; the entire document is the vision for our community. The **draft** Community Vision – Nillumbik 2040 provides a strong basis for long-term planning for Council and the community, and has already helped shaped our **draft** Council Plan 2021-2025.

The document will also be used to inform future Council strategic planning, budgeting, service delivery and advocacy to ensure Council is acting in the best interests of our community, and is advocating to all levels of government and agencies.



Image: Message from our 2020-2024 elected Councillors, from left to right – Cr Richard Stockman, Cr Natalie Duffy, Cr Ben Ramcharan, Cr Karen Egan, Cr Peter Perkins, Cr Frances Eyre, Cr Geoff Paine

Developing a Community Vision for Nillumbik

Developing a community vision is a practical way of involving the community in long-term strategic planning, ensuring that the community's priorities are always considered in Council's planning and decision making.

This community vision document was developed following extensive community engagement through the Our People, Our Place, Our Future community engagement program that occurred in early 2021. Over 2,000 participants from our community engaged with Council through survey responses, community pop-ups, online and in-person workshops and written submissions. In developing this vision, we asked our community what they valued.



Image: Word cloud generated with responses from the Our People, Our Place, Our Future engagement program

The aspirations presented in this document are reflective of our community's feedback and sentiment from this community engagement program.



Images: One of 11 community 'pop ups' during the Our People, Our Place, Our Future engagement program



Image: Enjoying one of our many play spaces

Our Themes

The framework for the community vision has been designed using the following four themes:

- Our People
- Our Place
- Our Future
- Our Council.

Each theme is a key focus area for Council and our community both now and into the future. The four themes contain a number of aspirations which were informed by the participant feedback received during the Our People, Our Place, Our Future engagement program. The direct quotes from participants included in this document illustrate context and sentiment to what was broadly received from this community engagement program.



Image: A rural landscape in our Green Wedge



Image: Being creative in a local art class at Living and Learning Nillumbik

Our People

Community is at the heart of the Shire of Nillumbik. We will work to keep our community engaged, connected, active and supported in a healthy, safe and sustainable environment.

Aspirations

In 2040, we want Nillumbik to be a place where:

- Equity, diversity and inclusion underpins all aspects of community life
- The culture and heritage of the Wurundjeri Woi Wurrung people is understood and recognised as a proud part of our shared identity
- Our connection to the Green Wedge is celebrated by all who live, work or enjoy their time in it
- Equal access to programs and initiatives encourage physical and mental wellbeing
- People of all ages and stages are supported through accessible services that are responsive to their individual needs
- Education and lifelong learning are valued as key contributors to social connection, personal development and wellbeing
- Participation and engagement in community life is encouraged, volunteering is recognised, and opportunities to build social connections and resilience are many and varied.

Participant responses from the Our People, Our Place, Our Future engagement program:

"Let's focus on access, equity and inclusion across all areas of service delivery."

"Connection to Country by bringing in Aboriginal education and working with Elders to achieve this."

"Promoting social connections to prevent social isolation and improved mental health for our community."

"Programs that provide youth with meaningful interactions that promote healthy and productive activities and life choices."

"Lifelong learning opportunities; increased Neighbourhood House activity to enhance social connection."

"Community engagement must be inclusive".



Image: Enjoying a ride along one of our many shared trails

Our Place

Nillumbik's places and spaces make an important contribution to health, wellbeing, culture, the environment, biodiversity and economic success. We want to strengthen the Shire's identity through reinforcing existing natural and built form, improving accessibility and connectivity, protecting the environment, and enhancing both the Green Wedge and tree canopy in urban areas.

Aspirations

In 2040, we want Nillumbik to be a place where:

- The promotion of our shared heritage, history, arts and artistic culture strengthens our community
- Our Green Wedge and its environmental integrity are protected to ensure a safe haven for native wildlife, thriving biodiversity and native vegetation
- A considered approach to planning and development ensures that Nillumbik's unique environment and neighbourhood character is retained and enhanced
- The planning, maintenance and enhancement of public open spaces enables and encourages safe, healthy and active lifestyles
- The accessibility and vibrancy of local townships, neighbourhoods and activity centres is enhanced through connectivity with a focus on improving active and public transport options
- The application of design principles creates a built environment that strengthens the inclusiveness and accessibility of our neighbourhoods, activity centres, facilities and services, while respecting our natural environment
- Planning and preparedness for bushfire and other emergencies protects life, critical infrastructure, property and the environment.

Participant responses from the Our People, Our Place, Our Future engagement program:

"Access to local open green natural spaces. People should be encouraged to value and protect their natural environment."

"Council is encouraged to implement effective neighbourhood character controls and community engagement activities to help support improved community wellbeing and sense of place."

"I would love to live in a carbon neutral Shire where natural environments are protected and biodiversity is nurtured."

"Conservation and reinvigoration of natural spaces and systems, maintenance and protection of biodiversity and stewardship of the natural environment for the long term."

"Residents enjoy a wide variety of recreational and cultural pursuits and have a strong sense of feeling part of their local community and townships."

"Embrace the many enriching experiences and lifestyles that comes from living within the Nillumbik Green Wedge and the opportunity to enjoy our natural environment."

"Creative public transport or active transport options - bringing life into Nillumbik townships."

"I would love to see safer roads, pedestrian paths and public transport."



Image: Connecting at Edendale Community and Environment Farm

Our Future

We acknowledge the pressures on liveability that in the future will likely challenge the way we live. We want to strengthen Nillumbik's ability to manage and adapt to changing circumstances, to ensure the Shire and our community remain sustainable and resilient.

Aspirations

In 2040, Nillumbik will be a place where:

- A commitment to sustainable living, enhanced environmental practices and action on climate change is evident in all that we do
- Our community is resilient and able to cope with the inevitable impacts of changes to the climate, takes time to repair the damage, and works hard to mitigate future risks
- Council assets and facilities play a significant role in a future where renewable energy is standard
- The impact of waste is considered, and waste reduction is a priority
- Emergency management information and capabilities are shared in the pursuit of preparedness, prevention, response and recovery
- Anticipating and adapting to changing situations allows Council and our community to respond to threats and vulnerabilities in a timely and organised manner
- The strong character and offerings of the Shire are actively promoted, supporting a vibrant and sustainable economy and an actively involved community.

Participant responses from the Our People, Our Place, Our Future engagement program:

"Plan now for the bigger issues like recycling, climate change and loss of biodiversity."

"Look nationally and internationally for the best ideas."

"Protect the Green Wedge and the bushy ambience and local style as much as possible as it will pay off in spades in future, financially in particular. Develop initiatives to strengthen community resilience, in its broadest sense."

"Ensuring the strategy includes plans for the upgrade of infrastructure and services to keep pace with the projected population growth."

"Maintaining services in an evolving environment."

"Base initiatives on best science and expertise Council can find, put community resilience, sustainability and preparedness at centre of decision making processes, involve and inform community in solutions and future vision."

"Get involved, create events where we can all get together and collectively create the future that we want for all future generations; planting trees, growing food, maintaining community gardens, cleaning up rubbish."



Image: Djirri Djirri Dance Group performing at a Council event

Our Council

By strengthening trust and support within our community, Council can go further to deliver fundamental services and innovative programs to facilitate the best possible community outcomes.

Aspirations

In 2040, we want Nillumbik to be a place where:

- Transparent consultation and engagement processes provide a greater insight into our communities
- Our community is empowered to make decisions through greater access to information provided by Council
- Council supports and encourages social connections and interaction by facilitating community spirit and participation in our community
- Council delivers programs and services in line with its commitment to a great customer experience
- Council advocates for the needs of our Shire, promotes local and regional issues, driving change at local, state and federal level
- Council has the courage to embrace future challenges, to take informed risks and adopts new ways of working to bring about necessary change.

Participant responses from the Our People, Our Place, Our Future engagement program:

"Have a strong team dedicated to community consultation and feedback. Discuss and consult on difficult issues."

"Council responsive to community concerns."

"Better breakdown of what rates are spent on, rates are extremely high and that's fine if we know exactly what it is spent on, not enough transparency."

"Be smarter in attracting and using funds."

"Community engagement to establish affordability and service priorities, maximise funding capability from federal and state sources, clear prioritisation of programs to meet community need."

"Plan, engage, fund."

"Community and Council are in tune with each other's needs."

"A Council for the people, one that listens and respects - not just people, but the environment too. A Council that values public contributions and always strives to improve."

"Engagement, education, inspiration, implementation, celebration."

Nillumbik community profile



Image: View from Kangaroo Ground War Memorial Park

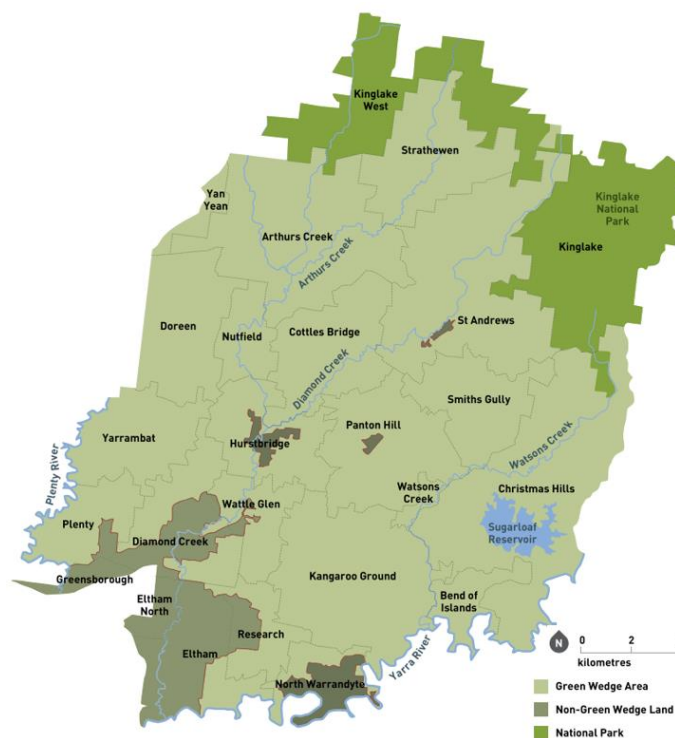
The area now comprising the Shire of Nillumbik was inhabited for over 60,000 years by the Wurundjeri-willam clan of the Woi Wurrung speaking people.

Nillumbik is located in Melbourne's north-east. The Shire has a population of approximately 65,000 people who enjoy a healthy, safe and family-friendly lifestyle.

Nillumbik is a collection of townships and villages, each with its own unique identity and heritage. Renowned as “the Green Wedge Shire”, or “the lungs of Melbourne”, the area offers residents and visitors a unique rural environment of bushland, small farms and waterways.

The Nillumbik Green Wedge covers 91 per cent of the total area of the Shire and is host to a number of state and national parks. Nillumbik’s Green Wedge is highly valued locally and regionally due to its biodiversity, natural beauty, visitor experiences, agriculture, grazing land, rural living and open space.

Participation in artistic and cultural activities, volunteering, and life-long education help create a vibrant community. Additionally, the role of leisure and recreation facilities, community festivals, events and activities, schools and community groups promote strong and lasting connections between residents as well as visitors to the Shire.



Nillumbik now and into the future

Population demographics

NILLUMBIK – NOW	NILLUMBIK – FUTURE
Population Nillumbik's estimated residential population is 65,369, with the majority of our residents (52%) aged between 25 and 64 years. Aboriginal and Torres Strait Islander people make up 0.4% of our population. 16% of Nillumbik's residents were born overseas. English is a second language for 5,636 people living in Nillumbik. 3.3% of people living in Nillumbik have the need for assistance due to a severe or profound disability.	Population Nillumbik is a low growth community. The population is forecasted to grow by approximately 7.5% to 70,314 by 2036. By 2036, 24% of Nillumbik residents will be aged 65 years and older. The life expectancy at birth for males and females born in Nillumbik, in the year 2007, is 82.3 years and 85.2 years respectively.
Population age demographics (2021) 0 to 4 years – 3,268 (5%) 5 to 11 years – 5,951 (9%) 12 to 24 years – 11,885 (18%) 25 to 64 years – 33,680 (52%) 65+ years – 10,585 (16%)	Forecasted age demographics (2036) 0 to 4 years – 3,379 (5%) 5 to 11 years – 5,675 (8%) 12 to 24 years – 11,364 (16%) 25 to 64 years – 33,156 (47%) 65+ years – 16,741 (24%)
Total households 23,024	Forecasted total households (2036) 26,056 (representing an increase of 13%)
Average household size (2021) 2.82	Forecasted household size (2036) 2.66 (representing a decrease of 6%)
Household types (2021) Couple family with children – 10,349 (45%) Couple family without children – 6,527 (28%) One-parent family – 2,015 (9%) Other family – 134 (0.6%) Group household – 293 (1.4%) One person – 3,706 (16%)	Household types (2036) Couple family with children – 10,649 (41%) Couple family without children – 7,898 (30%) One-parent family – 2,170 (8.4%) Other family – 138 (0.6%) Group household – 292 (1%) One person – 4,909 (19%)
Total dwellings (2021) 23,475	Total dwellings (2036) 26,564 (representing an increase of 13%)

Reference: .id Consulting (2021) Nillumbik Shire Community Profile; Nillumbik Shire Council (2016) Nillumbik Health and Wellbeing Profile; Victoria in Future (2019) Population Household Projections; Victoria in Future (2019) Estimated Residential Population by Service Age Groups

Land area

NILLUMBIK – NOW	NILLUMBIK – FUTURE
Land area by square kilometres - 432 km²	
Urban land area – 39 km ² Non-urban land area – 393 km ²	Urban versus non-urban land area will remain the same – our Green Wedge Management Plan does not propose to change the Urban Growth Boundary (UGB), and similarly, State Government policy does not suggest any changes to the UGB in Nillumbik.

Reference: Nillumbik Shire Council (2019) Green Wedge Management Plan

Domains of liveability

NILLUMBIK – NOW	NILLUMBIK – FUTURE
Food security 2.1% of people in Nillumbik have reported that they do not have regular access to enough food.	Food security Food production is likely to be impacted by urban sprawl and climate pressures. Supporting a thriving food system will be fundamental to supporting a healthy and thriving community.
Employment 77% of Nillumbik's 38,730 residents travel outside the Shire for work. Nillumbik Shire Council is the largest employer in the shire.	Employment While work is likely to become more flexible, the future distribution of jobs will most likely result in residents still needing to travel outside the Shire for work, requiring improved transport options.
Transport 9.7% of employed residents use public transport to travel to work. 2% of employed people use active transport (cycle or walk) to travel to work.	Transport Changing population demographics, living and working conditions will mean that there are more people moving around the Shire accessing services, jobs, and facilities.
Public Open Space 74% of residential properties are within 400m of public open space.	Public Open Space The value and demand for public open space is likely to increase for both residents of and visitors to Nillumbik as growth in other parts of Melbourne continues to put increased pressure on urban environments.
Housing 94% of existing dwellings in Nillumbik are detached homes.	Housing An increase in the diversity of housing in Nillumbik will be required to meet future needs. Almost all of the additional housing required will be for couples without children or one-person households.
Walkability A 2012 assessment of Nillumbik's walkability for transport was ranked among the lowest in metropolitan Melbourne with only 24% of residents walking for transport, compared with 37% for greater Melbourne.	Walkability Safe, accessible and interesting walking routes for people of all abilities will enable increased active transport and is an indicator of a liveable community.
Social Infrastructure Changing demographic profiles, consumer preferences, technologies and service delivery models will need to be taken into consideration in the planning and provision of social infrastructure.	Social Infrastructure Partnerships, co-location and innovative delivery solutions for the provision of social infrastructure will be more important in the future.

References: Centre for Urban Research (2017) *Developing a Pilot Victorian Urban Liveability Index*; Giles-Corti et.al (2014) *How walkable is Melbourne? The development of a walkability index for Melbourne*; .id Consulting (2019) *Snapshot of the Shire*; Sheridan, J. et.al (2015) *Melbourne's Foodbowl*; Nillumbik Shire Council (2021) *Nillumbik Shire Community Profile*.



Image: Having fun in our vast open spaces

