

# DIAMOND CREEK COMMUNITY RECREATION PARK /

FINAL DESIGN  
CONCEPT PLANS.



NILLUMBIK SHIRE COUNCIL.  
JUNE 2023. REVISION C.

AUTHORS /  
T. ALLENDER  
L. KITCHENER





# ACKNOWLEDGMENT /

The Trail Collective would like to begin by acknowledging the traditional custodians of the land on which we work and live today, and pay our respects to their elders past and present.

We extend that respect to Aboriginal and Torres Strait Islander peoples and acknowledge the peoples' spirit, imagination and rich history of story telling that is an inspiration to us all.





# INTRODUCTION /

The Trail Collective (TTC) have been engaged by the Nillumbik Shire Council to design a new community recreation park at 145 Allendale Road, Diamond Creek, Victoria. In April 2022 TTC held a pre-design, community consultation in collaboration with council via an online information session and online survey. Using this information we came up with a concept design and this also went out for a draft design community consultation in September 2022.

This document displays the final design concept plans for the space at 145 Allendale Road, Diamond Creek, Victoria, Australia.

## BASELINE INFORMATION.

Late in 2021 the original Diamond Creek Trails (DCT) were removed, leaving the local riders with no place to ride nor call their own. Council received a great deal of negative feedback and responses from the local community and its users in relation to the DCT removal.

Since the Covid-19 pandemic, the Nillumbik Shire Council and surrounding council areas have experienced an increase of ambitious young locals taking it upon themselves to create dirt trails, tracks and unauthorised builds. This has created concern for many councils for various reasons, including environmental issues, risk, liability and insurance.

Since DCT's removal, council have looked at potential sites to provide the community with a purpose built space to ensure local riders have a facility that caters for their needs and desires. Council is still yet to make a decision on a location for the space. The Diamond Creek Trails is one of many steps Council is taking to encourage and engage with the community for wheeled sport facilities.

## CONSULTATION AND COMMUNITY ENGAGEMENT.

After positive and successful pre-design and draft design consultation processes the community have provided their desires, inclusions, project requirements and amendments to the design.

The design intent in this document is aligned with the desires, feedback and data collated from the pre-design and draft design community consultation phases of the project.





# DRAFT DESIGN CONCEPT PLAN /

## LEGEND /

### PROPOSED BMX TRAIL ELEMENTS & FEATURES.

- 1 START MOUND AND ROLL IN  
- HEIGHT - 3.0 M.
- 2 BEGINNER & INTERMEDIATE  
JUMP & RETURN SECTIONS  
- HEIGHT RANGE 0.75 TO 1.6 M.
- 3 SKILL DEVELOPMENT, TRANSFER  
LINES & JUMP SECTIONS  
- HEIGHT RANGE 1.4 TO 2.0 M.
- 4 ADVANCED JUMP SECTIONS  
- HEIGHT RANGE 1.5 TO 2.0 M.
- 5 WALL-RIDE AND 40' SHIPPING  
CONTAINER STORAGE UNIT  
- HEIGHT RANGE - TRANSITION  
1.5 M & CONTAINER WALL-RIDE 2.9 M.
- 6 RETURN LINE  
- HEIGHT RANGE 0.6 TO 1.2 M.
- 7 DIAMOND ASPHALT PUMP TRACK  
- HEIGHT RANGE 0.6 TO 1.5 M.
- 8 INDICATIVE DRAINAGE LOCATIONS.

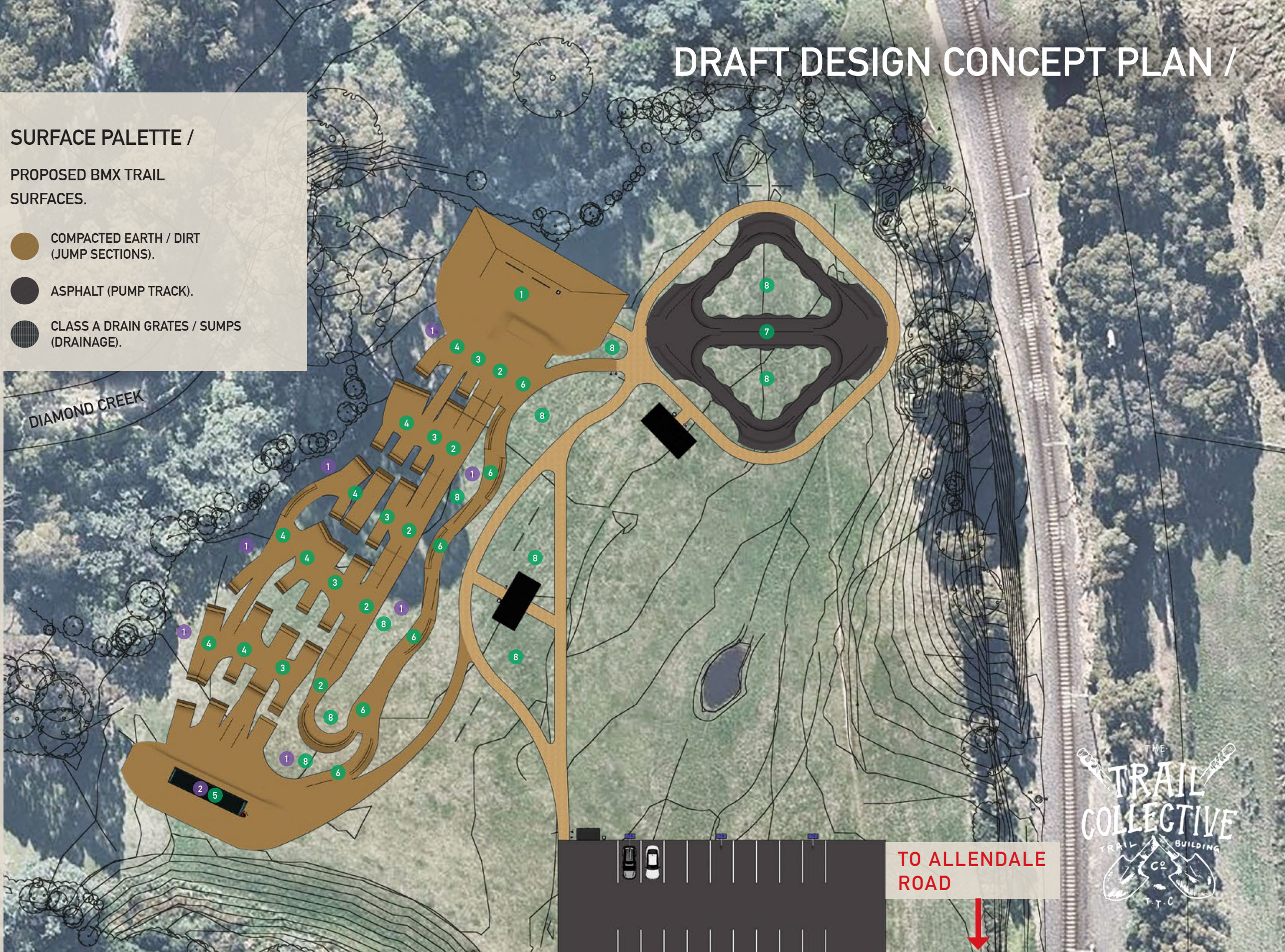
### REQUIRED TRAIL RESOURCES FOR MAINTENANCE.

- 1 RETRACTABLE HOSE REELS  
/ IRRIGATION TO SUPPORT  
MAINTENANCE OF THE SPACE.
- 2 STORAGE UNIT TO HOUSE TOOLS  
AND ACCESSORIES TO SUPPORT  
MAINTENANCE OF THE SPACE.

## SURFACE PALETTE /

### PROPOSED BMX TRAIL SURFACES.

- COMPACTED EARTH / DIRT  
(JUMP SECTIONS).
- ASPHALT (PUMP TRACK).
- CLASS A DRAIN GRATES / SUMPS  
(DRAINAGE).



CLIENT:

NILLUMBİK SHIRE COUNCIL.

PROJECT & REVISION NO:

DIAMOND CREEK  
COMMUNITY RECREATION PARK  
(AKA DIAMOND CREEK TRAILS)  
- DRAFT REV A.

DATE :

23 . 06 . 2023.

SCALE :



1:250 @ A3





# FINAL DESIGN CONCEPT PLAN /

## LEGEND /

### PROPOSED BMX TRAIL ELEMENTS & FEATURES.

- 1 START MOUND AND ROLL IN  
- HEIGHT - 3.0 M.
- 2 BEGINNER & INTERMEDIATE  
JUMP & RETURN SECTIONS  
- HEIGHT RANGE 0.75 TO 1.6 M.
- 3 SKILL DEVELOPMENT, TRANSFER  
LINES & JUMP SECTIONS  
- HEIGHT RANGE 1.4 TO 2.0 M.
- 4 ADVANCED JUMP SECTIONS  
- HEIGHT RANGE 1.5 TO 2.0 M.
- 5 WALL-RIDE AND 40' SHIPPING  
CONTAINER STORAGE UNIT  
- HEIGHT RANGE - TRANSITION  
1.5 M & CONTAINER WALL-RIDE 2.9 M.
- 6 RETURN LINE  
- HEIGHT RANGE 0.6 TO 1.2 M.
- 7 DIAMOND ASPHALT PUMP TRACK  
- HEIGHT RANGE 0.6 TO 1.5 M.
- 8 INDICATIVE DRAINAGE LOCATIONS.

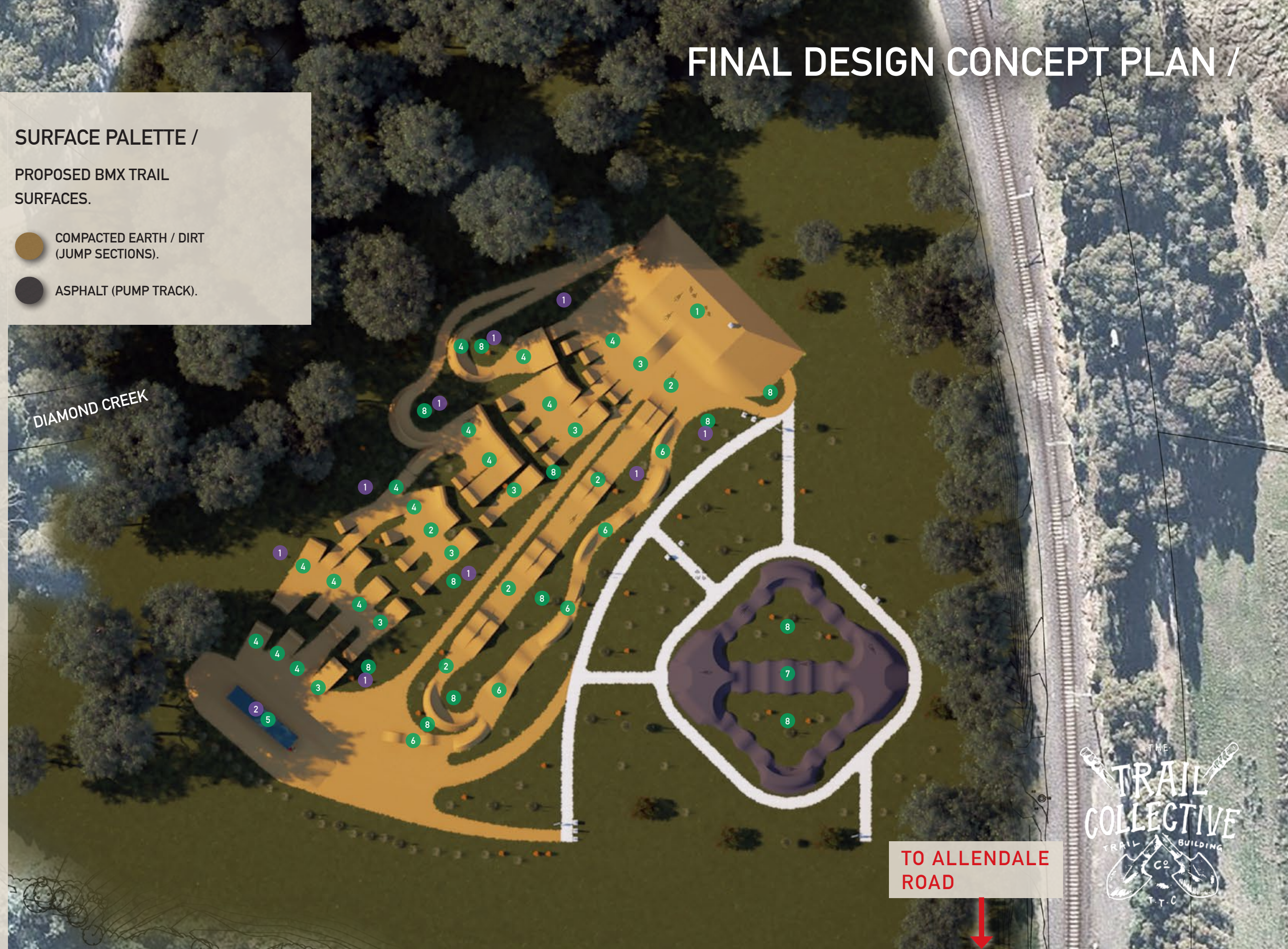
### REQUIRED TRAIL RESOURCES FOR MAINTENANCE.

- 1 RETRACTABLE HOSE REELS  
/ IRRIGATION TO SUPPORT  
MAINTENANCE OF THE SPACE.
- 2 STORAGE UNIT TO HOUSE TOOLS  
AND ACCESSORIES TO SUPPORT  
MAINTENANCE OF THE SPACE.

## SURFACE PALETTE /

### PROPOSED BMX TRAIL SURFACES.

- COMPACTED EARTH / DIRT  
(JUMP SECTIONS).
- ASPHALT (PUMP TRACK).



CLIENT:

NILLUMBİK SHIRE COUNCIL.

PROJECT & REVISION NO:

DIAMOND CREEK  
COMMUNITY RECREATION PARK  
(AKA DIAMOND CREEK TRAILS)  
- FINAL REV C.

DATE :

23 . 06 . 2023.

SCALE :



1:250 @ A3





# FINAL DESIGN CONCEPT PLAN /

## LEGEND /

### PROPOSED LANDSCAPE WORKS.

- 1 BENCH SEATING.
- 2 WAY FINDING & FACILITY SIGNAGE.
- 3 BINS & WASTE MANAGEMENT.
- 4 BIKE REPAIR STATIONS.
- 5 DRINKING WATER FOUNTAINS.
- 6 HORTICULTURE, LANDSCAPING & NATIVE TREE AREAS.
- ENTRY & ACCESS PATHWAYS.

## SURFACE PALETTE /

### PROPOSED LANDSCAPE SURFACES.

- CONCRETE. (PATHWAYS).
- RECYCLED COMPOSITE (WALL-RIDE CLADDING).

PLEASE NOTE: BATTERS ARE NOT SHOWN FOR CLARITY.

DIAMOND CREEK

TO ALLENDALE ROAD



CLIENT:

NILLUMBIK SHIRE COUNCIL.

PROJECT & REVISION NO:

DIAMOND CREEK  
COMMUNITY RECREATION PARK  
(AKA DIAMOND CREEK TRAILS)  
- FINAL REV C.

DATE :

23 . 06 . 2023.

SCALE :



1:250 @ A3





# FINAL OVERALL PERSPECTIVE /



CLIENT:

NILLUMBIK SHIRE COUNCIL.

PROJECT & REVISION NO:

DIAMOND CREEK  
COMMUNITY RECREATION PARK  
(AKA DIAMOND CREEK TRAILS)  
- FINAL REV C.

DATE :

23 . 06 . 2023.

VIEW :

ISO METRIC OVERALL PERSPECTIVE.

PLEASE NOTE: SOME BATTERS ARE  
NOT SHOWN FOR CLARITY.



# FINAL PERSPECTIVE 1 /



CLIENT:

NILLUMBIK SHIRE COUNCIL.

PROJECT & REVISION NO:

DIAMOND CREEK  
COMMUNITY RECREATION PARK  
(AKA DIAMOND CREEK TRAILS)  
- FINAL REV C.

DATE :

23 . 06 . 2023.

VIEW :

ISO METRIC PERSPECTIVE 1.

PLEASE NOTE: SOME BATTERS ARE  
NOT SHOWN FOR CLARITY.





CLIENT:  
NILLUMBIK SHIRE COUNCIL.

PROJECT & REVISION NO:  
DIAMOND CREEK  
COMMUNITY RECREATION PARK  
(AKA DIAMOND CREEK TRAILS)  
- FINAL REV C.

DATE :  
23 . 06 . 2023.

VIEW :  
ISO METRIC PERSPECTIVE 2.  
  
PLEASE NOTE: SOME BATTERS ARE  
NOT SHOWN FOR CLARITY.



# FINAL PERSPECTIVE 3 /



CLIENT:

NILLUMBIK SHIRE COUNCIL.

PROJECT & REVISION NO:

DIAMOND CREEK  
COMMUNITY RECREATION PARK  
(AKA DIAMOND CREEK TRAILS)  
- FINAL REV C.

DATE :

23 . 06 . 2023.

VIEW :

ISO METRIC PERSPECTIVE 3.

PLEASE NOTE: SOME BATTERS ARE  
NOT SHOWN FOR CLARITY.





CLIENT:  
NILLUMBIK SHIRE COUNCIL.

PROJECT & REVISION NO:  
DIAMOND CREEK  
COMMUNITY RECREATION PARK  
(AKA DIAMOND CREEK TRAILS)  
- FINAL REV C.

DATE :  
23 . 06 . 2023.

VIEW :  
ISO METRIC PERSPECTIVE 4.  
  
PLEASE NOTE: SOME BATTERS ARE  
NOT SHOWN FOR CLARITY.





*Specialist BMX Trail Design, Construction & Planning.  
The Trail Collective, Adelaide, South Australia.  
Since 2010.*

INFO@THETRAILCOLLECTIVE.COM.AU  
WWW.THETRAILCOLLECTIVE.COM.AU

ALL RIGHTS RESERVED. COPYRIGHT © TTC 2023

