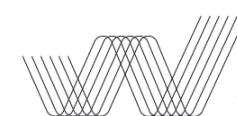


DIAMOND CREEK COMMUNITY INFRASTRUCTURE MASTER PLAN PROJECT - PHASE A

DIAMOND CREEK COMMUNITY INFRASTRUCTURE STRATEGIC PLAN

ADOPTED

at Council Meeting 22 November 2022



williamsross

in association with

Tract



K2 PLANNING



DIAMOND CREEK COMMUNITY INFRASTRUCTURE STRATEGIC PLAN

WHAT IS THE COMMUNITY INFRASTRUCTURE STRATEGIC PLAN?

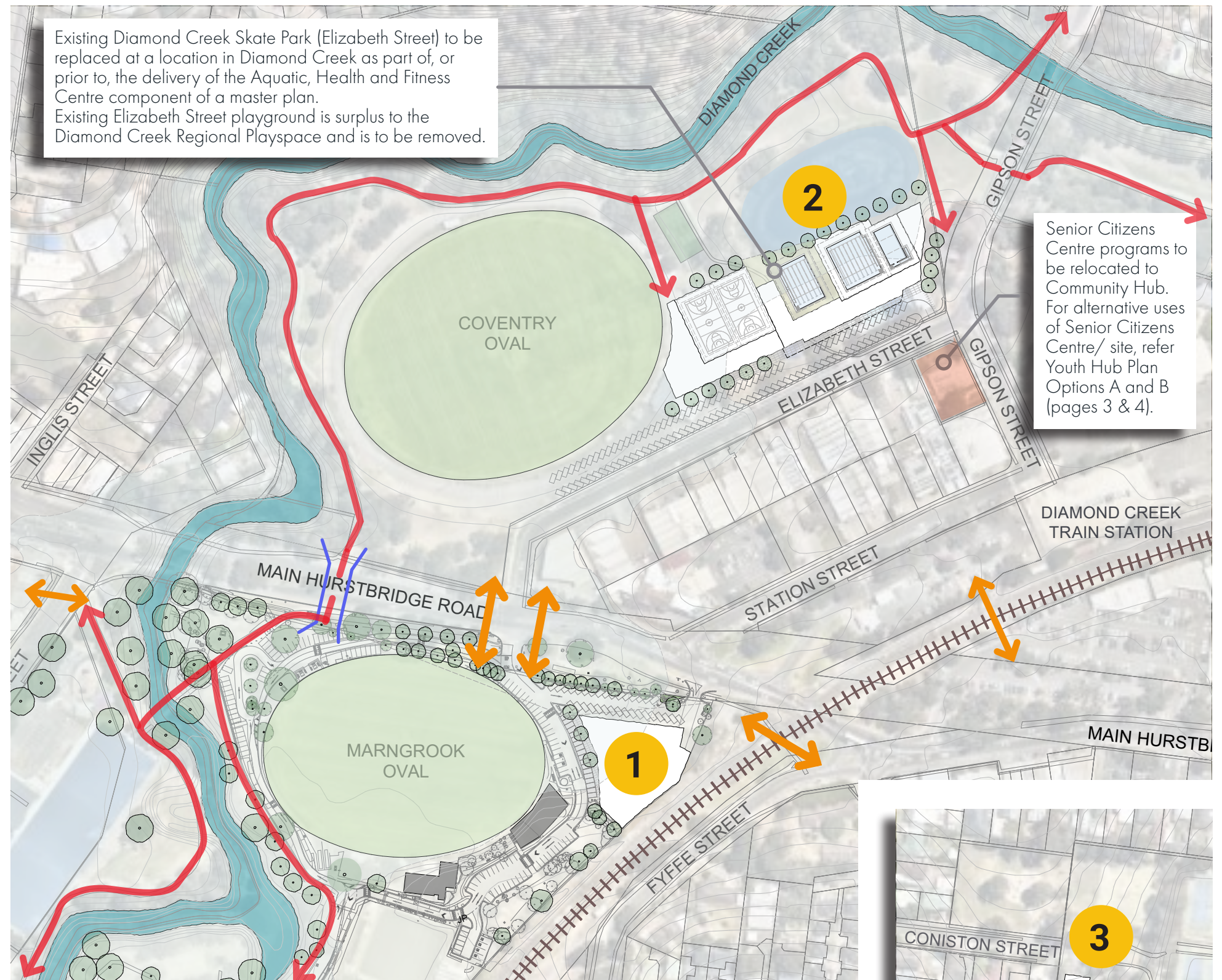
ADOPTED 22 NOV 2022

This strategic plan illustrates the types and locations of community infrastructure identified to meet the future needs of the Diamond Creek community as well as the wider communities of the Shire that the township serves.

Linked to this plan are two options being considered for the location of a Youth Hub. These are shown on supporting plans, Youth Hub Plan Option A (page 3), and Youth Hub Plan Option B (page 4).

Facilities that are considered within each infrastructure type shown on this plan, and within the Youth Hubs, are listed on page 5. Improvements proposed to existing community infrastructure are summarised on page 6.

The strategic plan is an early step in the broader development of a master plan that, subject to funding, will further develop the proposed community infrastructure and provide long-term direction for delivery.



LEGEND

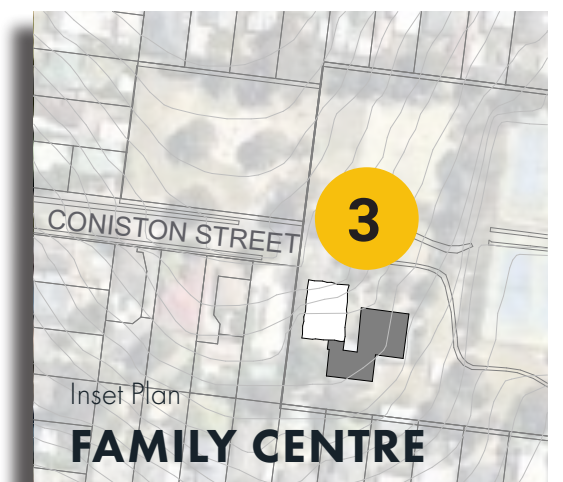
- Diamond Creek Trail and potential linkages
- Potential underpass
- Points of pedestrian crossing



North

0 50 100m

SCALE: 1:2500 at A3 size



1 COMMUNITY HUB

- New multi-level facility
- Library
- Neighbourhood House / Living & Learning
- Multi-purpose spaces and Creative arts
- Maternal and Child Health Centre - optional inclusion/ location
(See Coniston St Family Centre for alternate MCH centre location)

2 AQUATIC, HEALTH & FITNESS CENTRE

- New two-storey facility
- New indoor and outdoor pools and pool facilities inclusive of clubroom
- Health and fitness on first floor
- Creche
- Two new highball courts
- Redeveloped sports oval pavilion, inclusive of clubhouse, integrated within the centre

3 CONISTON ST FAMILY CENTRE

- Maternal and Child Health Centre addition to family centre - optional location
(See Community Hub for alternate MCH centre location)

DIAMOND CREEK COMMUNITY INFRASTRUCTURE STRATEGIC PLAN

YOUTH HUB PLAN OPTION A: INTEGRATED YOUTH HUB

ADOPTED 22 NOV 2022

This Youth Hub Plan Option A shows one of two locations being considered for the Youth Hub in the strategic plan (page 2).

This option proposes the Youth Hub as a dedicated facility that is integrated within the proposed Community Hub.

Facilities that are considered within the Youth Hub are listed on page 5.

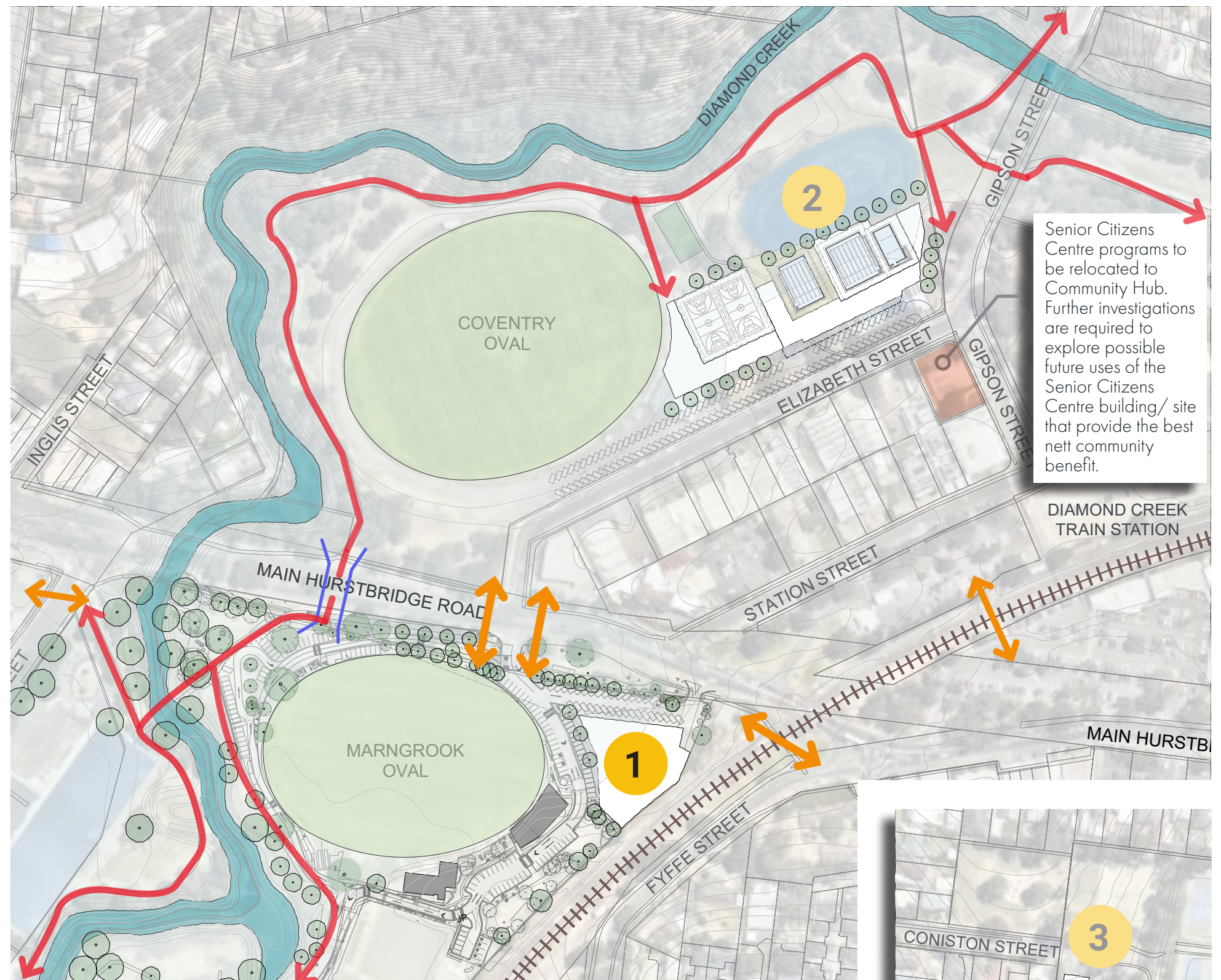
Refer Youth Hub Option B: Stand-alone Youth Hub (page 4) for the alternate location of the Youth Hub being considered.

1 COMMUNITY HUB WITH INTEGRATED YOUTH HUB

- Youth Hub integrated within Community Hub

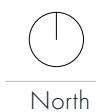
2 AQUATIC, HEALTH & FITNESS CENTRE

3 CONISTON ST FAMILY CENTRE

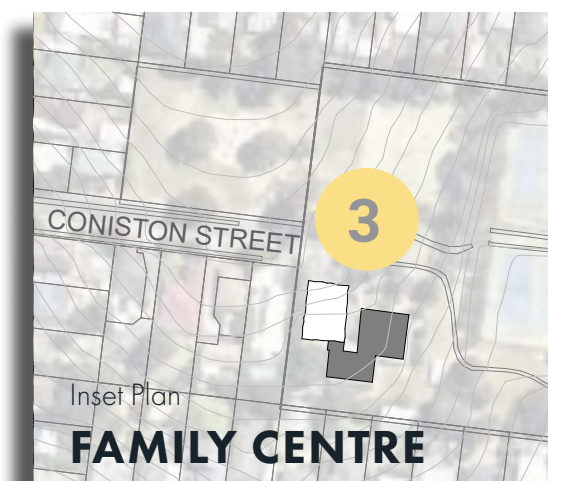


LEGEND

- Diamond Creek Trail and potential linkages
- Potential underpass
- Points of pedestrian crossing



0 50 100m
SCALE: 1:2500 at A3 size



DIAMOND CREEK COMMUNITY INFRASTRUCTURE STRATEGIC PLAN

YOUTH HUB PLAN OPTION B: STAND-ALONE YOUTH HUB

ADOPTED 22 NOV 2022

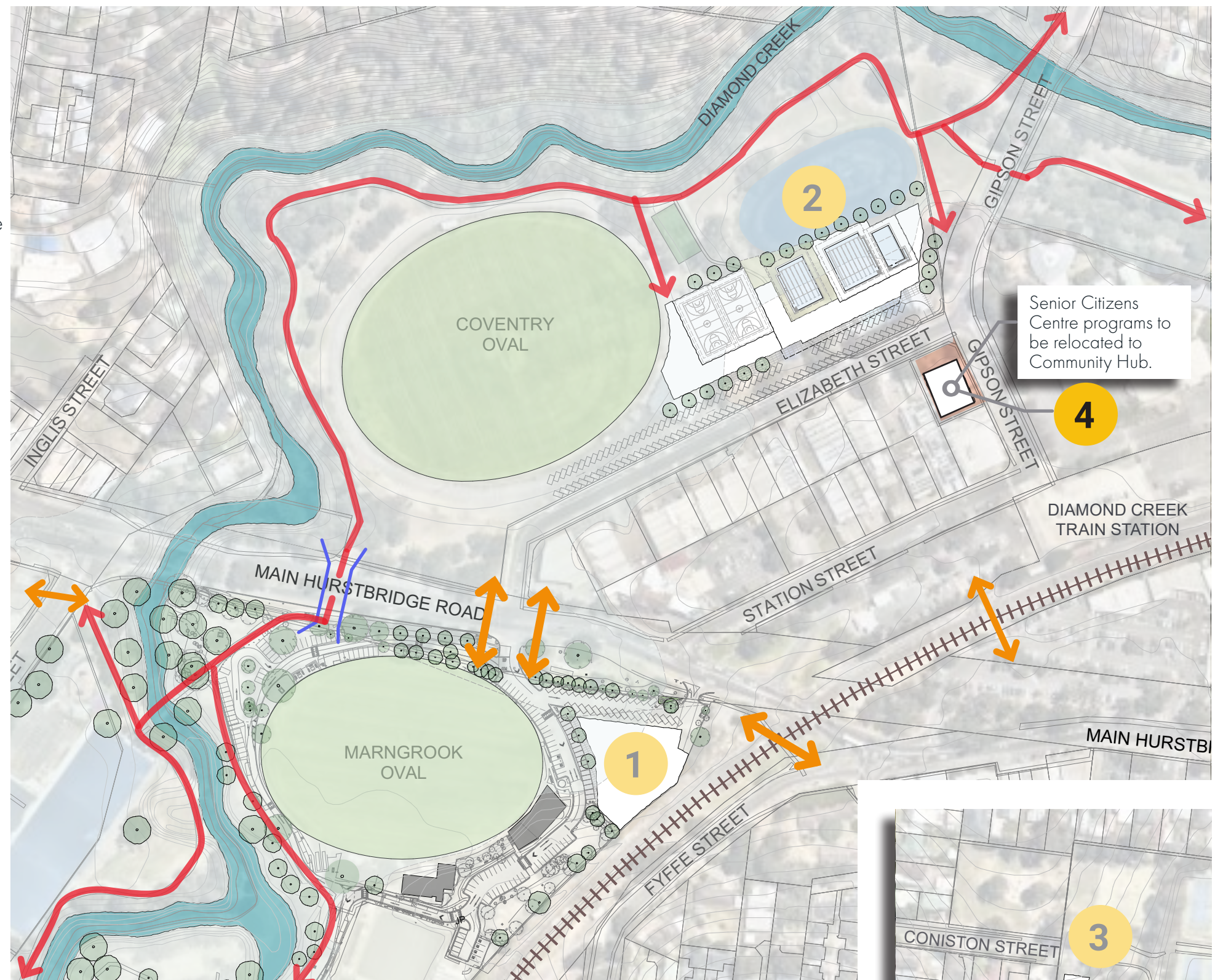
This Youth Hub Plan Option B shows one of two locations being considered for the Youth Hub in the strategic plan (page 2).

This option proposes the Youth Hub as a dedicated facility in a stand-alone location.

Facilities that are considered within the Youth Hub are listed on page 5.

Refer Youth Hub Option A: Integrated Youth Hub (page 3) for the alternate location of the Youth Hub being considered.

- 1 COMMUNITY HUB**
- 2 AQUATIC, HEALTH & FITNESS CENTRE**
- 3 CONISTON ST FAMILY CENTRE**
- 4 STAND-ALONE YOUTH HUB**
 - Single-storey facility



LEGEND

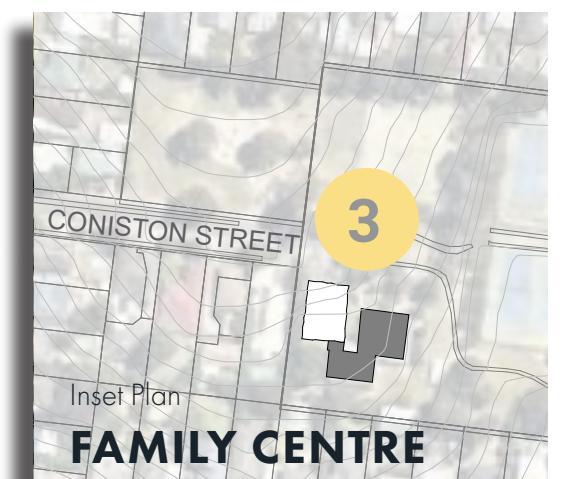
- Diamond Creek Trail and potential linkages
- Potential underpass
- Points of pedestrian crossing



North

0 50 100m

SCALE: 1:2500 at A3 size



DIAMOND CREEK COMMUNITY INFRASTRUCTURE STRATEGIC PLAN

WHAT FACILITIES ARE PROPOSED?

ADOPTED 22 NOV 2022

Community infrastructure type (Numbers and labels, below, correlate to the plans, pages 2, 3 & 4)	What facilities are proposed?
1 COMMUNITY HUB	Neighbourhood House / Living & Learning Nillumbik <ul style="list-style-type: none"> Welcoming reception point with lounge / cafe space with possible social enterprise Learning spaces including dedicated art spaces Multi-purpose function and meeting spaces for a range of activities including immunisations Support spaces including shared kitchen, storage, public amenities, staff workspace Business working spaces
	Library <ul style="list-style-type: none"> Shared foyer and entry, study spaces, reading spaces, children’s and youth areas Multi-purpose function and meeting spaces, co-working and other support spaces including storage, staff workspace
	Creative arts <ul style="list-style-type: none"> Flexible visual arts gallery / Performance space Rehearsal and small performance space (studio) Performer amenities and back-of-house storage and support spaces
With Maternal and Child Health Centre location option	Maternal and Child Health Centre <ul style="list-style-type: none"> Three Maternal and Child Health nurse suites, and an activity space with an outdoor area, storage and amenities
With integrated Youth Hub (Youth Hub Plan Option A)	Youth Hub <ul style="list-style-type: none"> Entry / Lounge space Activity spaces and consulting / meeting spaces, kitchen, storage, access to outdoor spaces
2 AQUATIC, HEALTH & FITNESS CENTRE	Aquatic <ul style="list-style-type: none"> Shared entry, reception, administration and first aid spaces, support spaces including storage, pool plant areas Aquatic facilities including indoor and outdoor heated 25m pools, learn-to-swim pool Wet change and amenities including adult accessible change facility Swim clubroom, party room, cafe addressing aquatic and foyer spaces
	Health and Fitness <ul style="list-style-type: none"> Gymnasium and group fitness spaces with consulting suites Support spaces including dry change and amenities and storage
	Highball courts <ul style="list-style-type: none"> Two new indoor highball courts to netball / basketball dimensions with storage Player and umpire change and amenities including accessible amenities
	Coventry Oval pavilion <ul style="list-style-type: none"> Clubhouse / social space; canteen / kiosk with storage Change and amenities for players and umpires including accessible amenities, gymnasium
	Creche <ul style="list-style-type: none"> Creche room with junior amenities, storage and outdoor play space
3 CONISTON ST FAMILY CENTRE (With Maternal and Child Health Centre location option)	Maternal and Child Health Centre <ul style="list-style-type: none"> Three Maternal and Child Health nurse suites, and an activity space with an outdoor area, storage and amenities
4 STAND-ALONE YOUTH HUB (Youth Hub Plan Option B)	Youth Hub <ul style="list-style-type: none"> As per integrated Youth Hub Plan Option A, above

DIAMOND CREEK COMMUNITY INFRASTRUCTURE STRATEGIC PLAN

HOW WILL EXISTING USER GROUPS BENEFIT FROM THE PLAN?

ADOPTED 22 NOV 2022

The following table highlights some of the current users of existing community infrastructure that is proposed for change in the plan, and how the plan addresses the existing and anticipated needs of the various user groups.

A summary of all proposed community infrastructure changes and facilities is provided on page 5.

Which user groups will benefit?	How does the plan improve on existing infrastructure?	Where are the proposed infrastructure improvements located? (Numbers and labels, below, correlate to the strategic plan, page 2)
Diamond Creek Neighbourhood House / Living & Learning Nillumbik	New and expanded Neighbourhood House facility provided at proposed Community Hub. Existing Neighbourhood House programs relocated to Community Hub.	1 COMMUNITY HUB
Diamond Creek Senior Citizens Centre network	New multi-purpose facilities provided at proposed Community Hub. Existing Senior Citizens Centre programs relocated to Community Hub. In Youth Hub Plan Option A, further investigations are required to explore possible future uses of the Senior Citizens Centre / site that provide the best nett community benefit. In Youth Hub Plan Option B, the stand-alone Youth Hub is located at the Senior Citizens Centre site.	1 COMMUNITY HUB
Diamond Creek Maternal and Child Health users	New and expanded Maternal and Child Health Centre. Location options include: . within Community Hub, and . at Coniston Street Family Centre. Decommissioning of existing Maternal and Child Health Centre in Diamond Creek Community Centre (DCCC) as part of development of proposed Community Hub.	1 COMMUNITY HUB 3 CONISTON STREET FAMILY CENTRE
Coventry Oval sporting clubs	New sports pavilion integrated in proposed Aquatic, Health & Fitness Centre. Existing pavilion demolished to make way for new centre.	2 AQUATIC, HEALTH & FITNESS CENTRE
Diamond Creek Outdoor Pool users	New 25m outdoor pool and expanded aquatic facilities provided as part of proposed Aquatic, Health & Fitness Centre, replacing existing 25m outdoor pool and pavilion.	2 AQUATIC, HEALTH & FITNESS CENTRE
Diamond Creek Community Centre highball court users	Development of two new indoor highball courts at proposed Aquatic, Health & Fitness Centre. Removal of existing highball court at DCCC as part of development proposed Community Hub.	2 AQUATIC, HEALTH & FITNESS CENTRE
Diamond Creek Community Centre gym users	Development of new health and fitness facilities at proposed Aquatic, Health & Fitness Centre. Removal of existing gym at DCCC as part of proposed Community Hub.	2 AQUATIC, HEALTH & FITNESS CENTRE
Diamond Creek Community Centre creche users	Creche facility at proposed Aquatic, Health & Fitness Centre.	2 AQUATIC, HEALTH & FITNESS CENTRE
Diamond Creek Skate Park users	New skate park to replace existing Diamond Creek Skate Park (Elizabeth Street) at a location in Diamond Creek. The replacement is to occur as part of, or prior to, the delivery of the Aquatic, Health and Fitness Centre component of a master plan.	Location and design of new skate park in Diamond Creek to be investigated with skater community.
Elizabeth Street playground users	Existing Elizabeth Street playground will be removed as it is surplus to the recently completed Diamond Creek Regional Playspace.	Already incorporated into the Diamond Creek Regional Playspace.



williamsross

Williams Ross Architects Pty Ltd
Suite 1, 70 Kerr Street, Fitzroy, Victoria 3065
T (03) 9416 3044

email@williamsross.com | www.williamsross.com

© Williams Ross Architects 2022

in association with

Tract



K2 PLANNING